

Use your coloured overlay



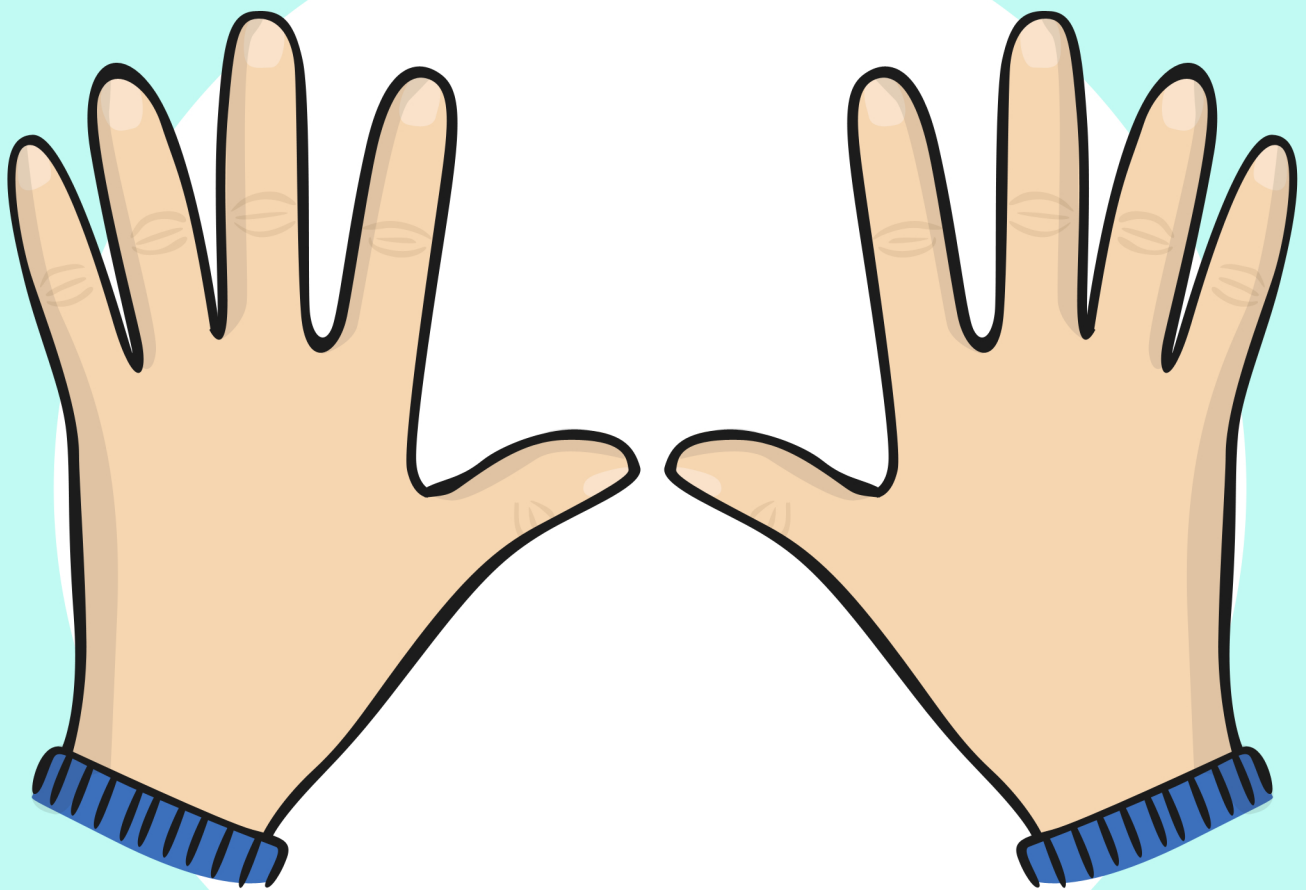
Use pictures to look for clues



Think about b and
d when writing



Think about 'left' and 'right'



When reading,
look for chunks
in words

sn**ow**man



fly**ing**



**Use a 'Try Pad' to try
out new spellings and
practise words**



Use your laptop or tablet to type your work



Use an Alphabet Arc to practise spelling words







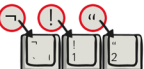








Look carefully at your teacher



Use your word grid or key word cards to help with spelling

Word Processing

 keyboard	 backspace	 shift key	 type
 folder	 enter	 symbols	 save
 return	 space bar	 arrow keys	 delete



twinkl

Make a mind map to help plan your ideas

A mind map template for the topic 'Weather means...'. The central node is a white cloud with a black outline containing the text 'Weather means...'. Four arrows of different colors (green, blue, pink, and yellow) point from the central cloud to four rectangular boxes with dashed borders. Each box is connected to the central cloud by an arrow of the same color. The boxes are arranged in a square pattern around the center. Each box is accompanied by a set of horizontal lines for writing. The top-left box has a green dashed border, the top-right has a blue dashed border, the bottom-left has a pink dashed border, and the bottom-right has a yellow dashed border. The central cloud has a black outline and contains the text 'Weather means...'. The entire template is enclosed in a black rectangular border.

Weather means...

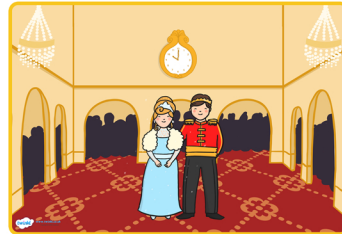
twinkl www.twinkl.co.uk

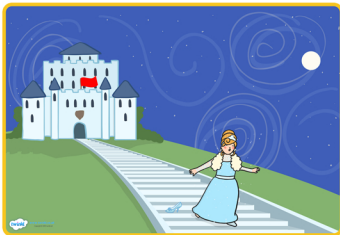
Use a storyboard to help plan your ideas

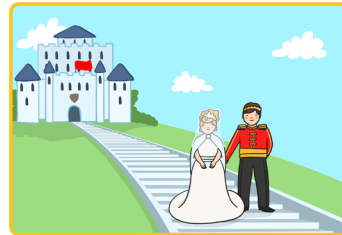
Name _____

Date _____



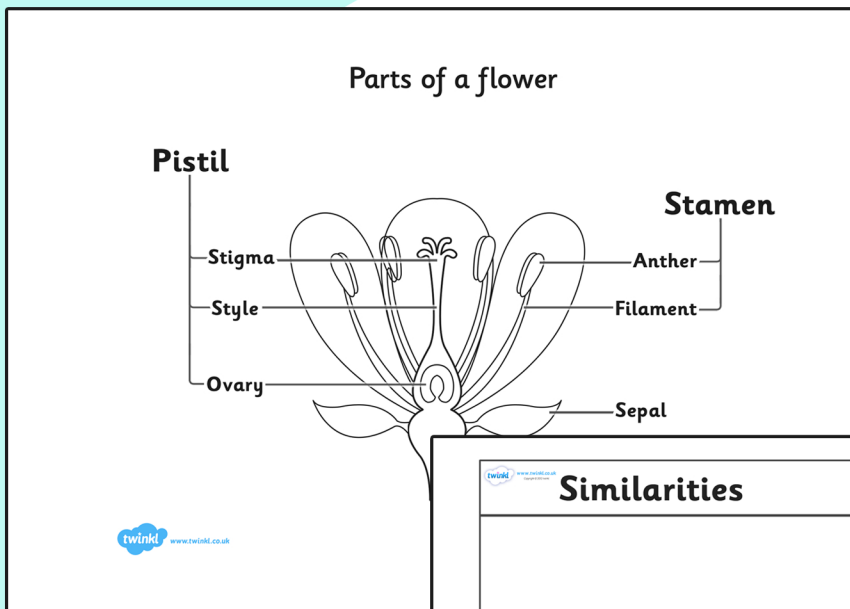








Draw a diagram or table to organise your work



Similarities	Differences

twinkl www.twinkl.co.uk